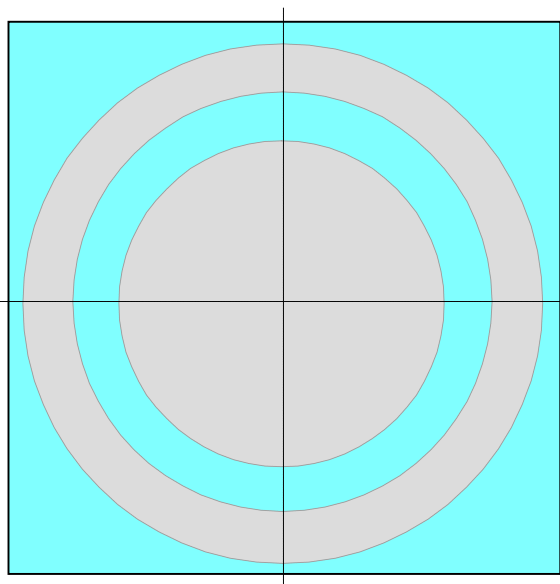
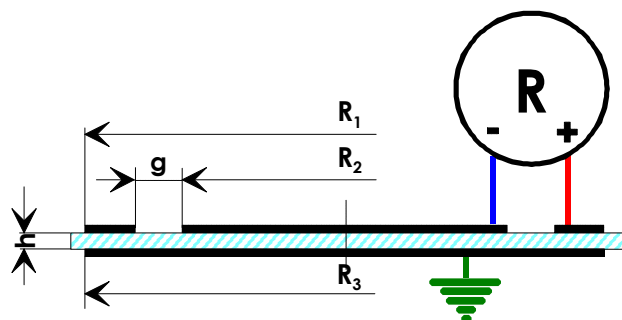


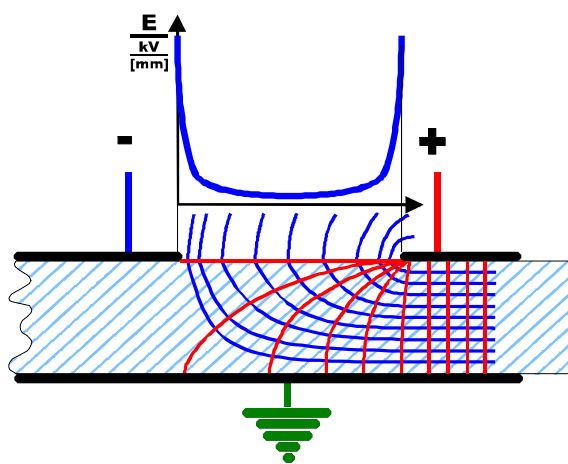
Determination of Surface Resistance

IEC 60093: Surface Resistance

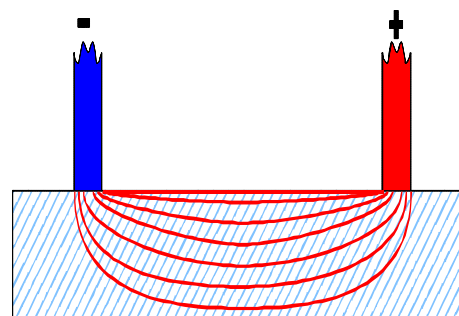
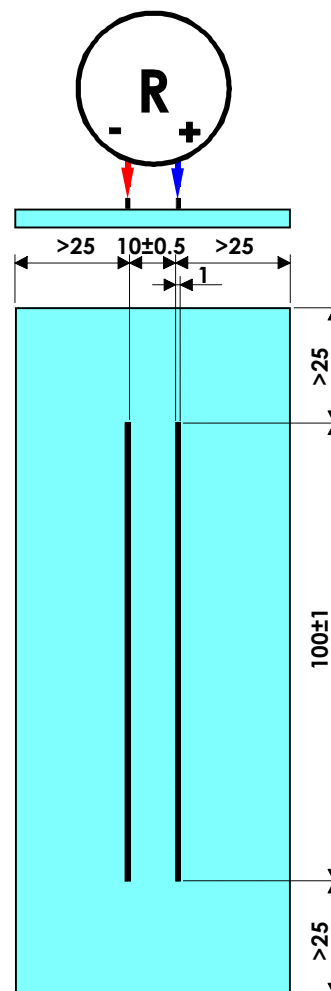
IEC 60167; DIN 53482: Insulation Resistance



Max($d_2 > 10h$, $d_2 > 25\text{mm}$); Max($g > 2h$, $g > 1\text{mm}$)



The non- linear electric field is disadvantageous because calculation supposes a homogeneous field.



Due to volume currents this is a insulation resistance test, with surface resistance contribution!